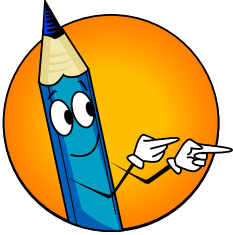


Spelling Rule Exceptions for Plural Nouns: Words That End in S

A plural noun means more than one. The word *dog* means one dog; the noun *dogs* means more than one dog. To make an English noun plural, we usually (but not always!) add an **s** to the end of the noun. An exception is when a word ends in the letter **s**. Then we add **-es** to make the noun plural.

Write the plural form of each of the following nouns.

1. glass _____

2. bus _____

3. dress _____

4. kiss _____

5. plus _____

6. miss _____

7. princess _____

8. gas _____

9. mess _____

10. cross _____

11. grass _____

12. address _____

13. loss _____

14. illness _____

15. moss _____

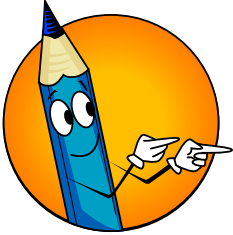
16. virus _____

17. boss _____

18. compass _____

19. mass _____

20. lens _____

Spelling Rule Exceptions for Plural Nouns: Words That End in S

A plural noun means more than one. The word *dog* means one dog; the noun *dogs* means more than one dog. To make an English noun plural, we usually (but not always!) add an **s** to the end of the noun. An exception is when a word ends in the letter **s**. Then we add **-es** to make the noun plural.

Write the plural form of each of the following nouns.

1. glass **glasses**

2. bus **buses**

3. dress **dresses**

4. kiss **kisses**

5. plus **pluses**

6. miss **misses**

7. princess **princesses**

8. gas **gases**

9. mess **messes**

10. cross **crosses**

11. grass **grasses**

12. address **addresses**

13. loss **losses**

14. illness **illnesses**

15. moss **mosses**

16. virus **viruses**

17. boss **bosses**

18. compass **compasses**

19. mass **masses**

20. lens **lenses**