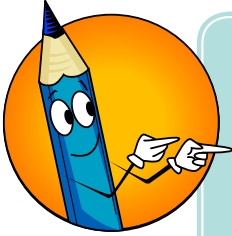


Spelling Rule Exceptions for Plural Nouns: Words That End in F and EF



A plural noun means more than one. The word *bag* means one bag; the word *bags* means more than one bag. To make an English noun plural, we usually (but not always!) add an *s* to the end of the noun. An exception to this rule is when a word ends in *f* or *fe*. We sometimes change the *f* or *fe* to *v* and add *-es* to make a plural word. A writer must learn when to change the *f* or *fe*.

Read each word very carefully. Write the plural form of each of the following nouns.

1. life _____

2. wolf _____

3. self _____

4. cafe _____

5. cliff _____

6. wife _____

7. gulf _____

8. elf _____

9. leaf _____

10. roof _____

11. loaf _____

12. shelf _____

13. thief _____

14. knife _____

15. giraffe _____

16. safe _____

17. calf _____

18. chief _____

19. half _____

20. chef _____

