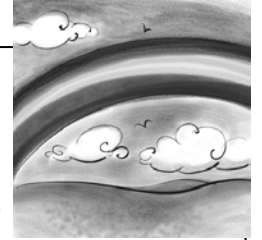


Name: _____

What is a Preposition?



A **preposition** is a part of speech, just like a noun or a verb. It connects a noun or pronoun to another word in the sentence, showing us the relationship between them.

Prepositions usually answer the questions **@/^** or **@}**. They often tell the location of a person or an object in time or space. This information is given as a group of words, rather than a single word. We call that group of words a prepositional phrase.

The prepositional phrase in the sentence below, **over the rainbow**, begins with the preposition **over**. The prepositional phrase connects the bird and the rainbow, telling us **where** the bird flew in relationship to the rainbow. The bird flew **over**, or above, the rainbow. It may help you to remember that the word **preposition** contains the word **position**.

Example: The bird flew **over the rainbow**.

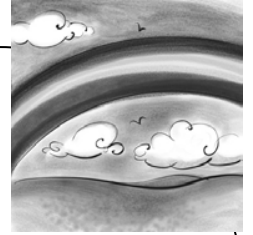
The prepositional phrase in the sentence below, **during class**, begins with the preposition **during**. The prepositional phrase connects the girls to the class, telling us **when** the girls were talking.

Example: The noisy girls were talking **during class**.

Read each of the sentences below. Underline the prepositional phrase and circle the preposition.

1. The brave knight carried the beautiful princess through the castle door.
2. Our terrified pet monkey disappeared under the bed.
3. The tiny crab and his larger friend scurried across the hot sand.
4. Andrew sat near his sister.
5. Inside the dishwasher, the fragile glasses rattled noisily.
6. There were so many people that Jessica had to park her car behind the building.
7. My mom's umbrella fell between the door and the bookshelf.
8. Rachel watched television until midnight.

What is a Preposition?



A **preposition** is a part of speech, just like a noun or a verb. It connects a noun or pronoun to another word in the sentence, showing us the relationship between them.

Prepositions usually answer the questions @/^ or @} . They often tell the location of a person or an object in time or space. This information is given as a group of words, rather than a single word. We call that group of words a prepositional phrase.

The prepositional phrase in the sentence below, **over the rainbow**, begins with the preposition **over**. The prepositional phrase connects the bird and the rainbow, telling us **where** the bird flew in relationship to the rainbow. The bird flew **over**, or above, the rainbow. It may help you to remember that the word **preposition** contains the word **position**.

Example: The bird flew **over the rainbow**.

The prepositional phrase in the sentence below, **during class**, begins with the preposition **during**. The prepositional phrase connects the girls to the class, telling us **when** the girls were talking.

Example: The noisy girls were talking **during class**.

Read each of the sentences below. Underline the prepositional phrase and circle the preposition.

1. The brave knight carried the beautiful princess through the castle door.
2. Our terrified pet monkey disappeared under the bed.
3. The tiny crab and his larger friend scurried across the hot sand.
4. Andrew sat near his sister.
5. Inside the dishwasher, the fragile glasses rattled noisily.
6. There were so many people that Jessica had to park her car behind the building.
7. My mom's umbrella fell between the door and the bookshelf.
8. Rachel watched television until midnight.